

VEHICLE INSPECTION REPORT

NX180LG

Iveco Stralis 460

Inspection

Serious Damage? No

Vehicle

VAT Plus VAT

V5 Buyer To Apply

Details

Reg. date 01/05/2018

VIN WJMS62NT90C394373

Axle Combi 6x2

Year 2018

Body Style Tractor Unit

Steering Combi Mid-Lif Steert

Mileage 656,602 Km Not Warranted

MOT Due 30/06/2026

Rear Suspension Air

Fuel Type Diesel

Cab Type HI-WAY CAB

Colour BLUE

Gearbox AUTOMATIC

SLIDING 5TH WHEEL, HYDRIVE HYDRAPAK

Tyres

NSF NSI1

NSI2

NSI3

NSI4

OSF OSI1

OSI2

OSI3

OSI4

Spare NSO1

NSO2

NSO3

NSO4

OSO1

OSO2

OSO3

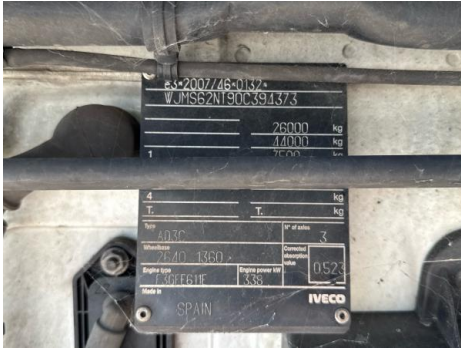
OSO4

Features

- Bluetooth connection
- Cruise control
- Digital radio
- Air conditioning
- Front electric windows
- Central locking
- Cloth seat trim

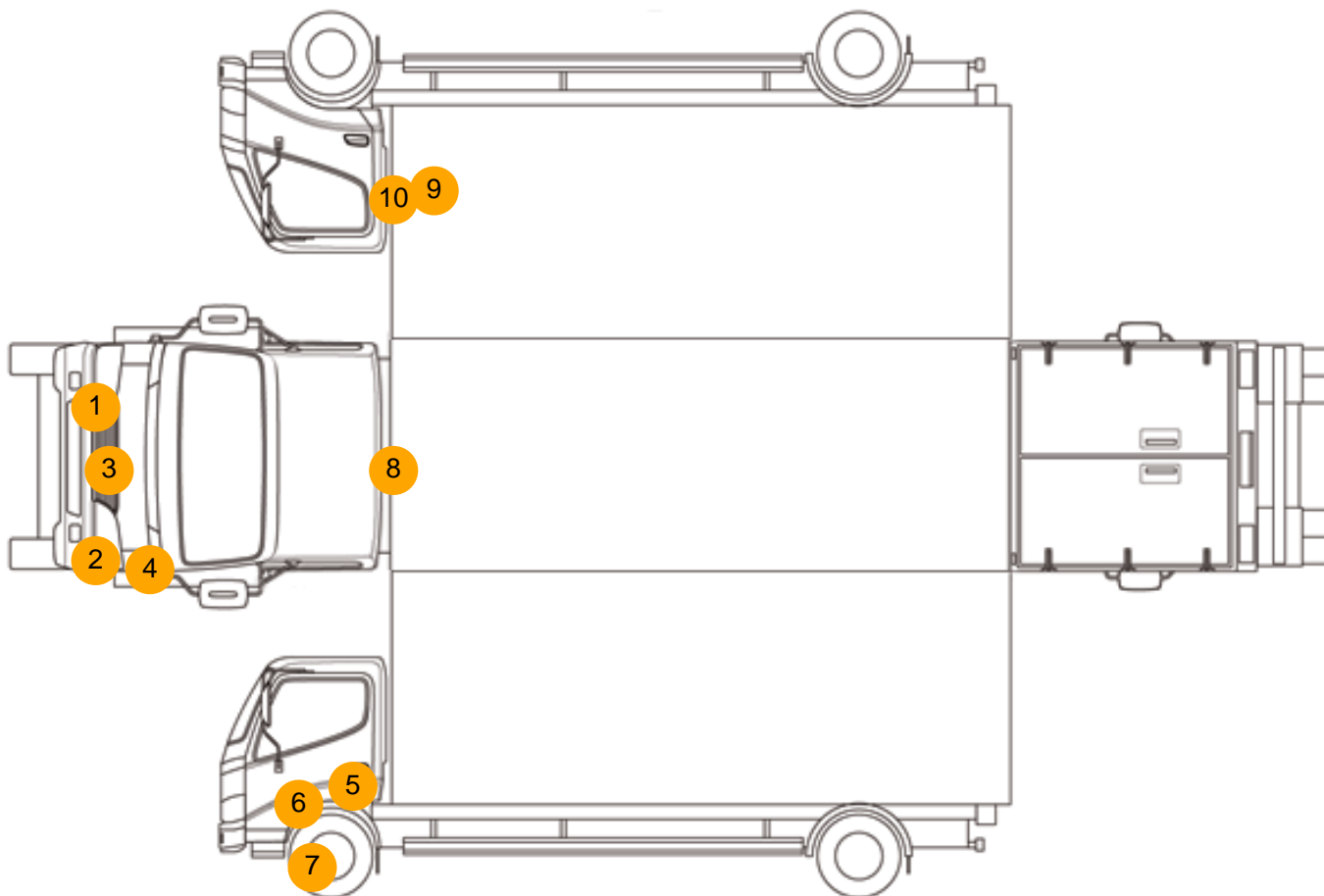
Photos







Condition Check



Damage Photos



1: Bumper Front Moulding
Missing
Replace



2: Bumper Front Moulding
Missing
Replace



3: Bumper Front
Chipped
Multiple Chips



4: Panel Front
Scratched
Over 25mm Thru Paint



5: Door nsf
Scratched
Over 25mm Thru Paint



6: Door nsf
Scratched
Over 25mm Thru Paint



7: Bumper Front Moulding
Broken
Replace



8: Panel Rear
Dented
Over 30mm



9: Qtr Panel osr
Chipped
Multiple Chips



10: Door osf
Scratched
Over 25mm Thru Paint



11: Door Pad osf
Broken
Replace

Interior

Carpet Condition	OK	Upholstery Condition	Poor
Seat Condition	OK	Odour	-
Engine Runs	OK	No Excessive Smoking	OK
EML light illuminated	OK	DPF light illuminated	OK
ABS light illuminated	OK		